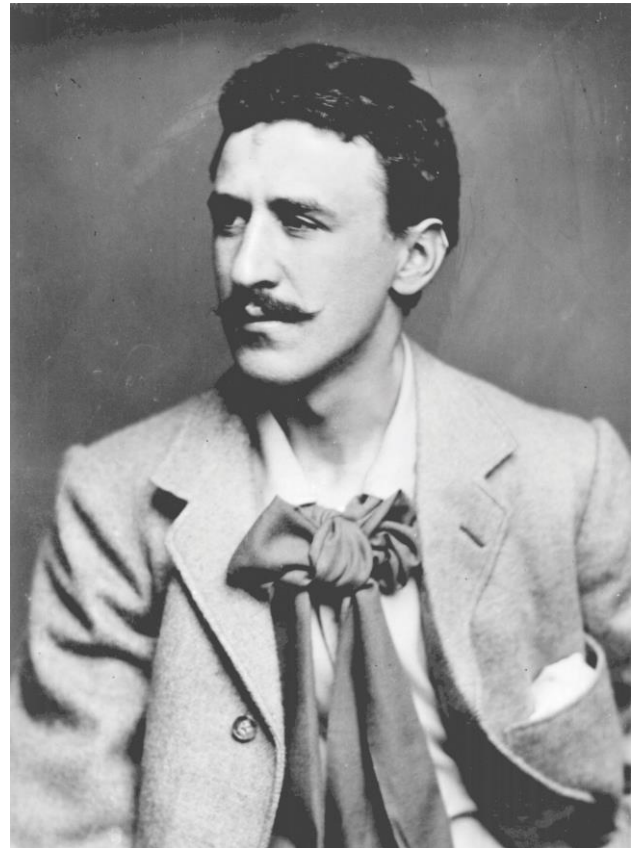




Tour Information



Charles Rennie Mackintosh In Glasgow

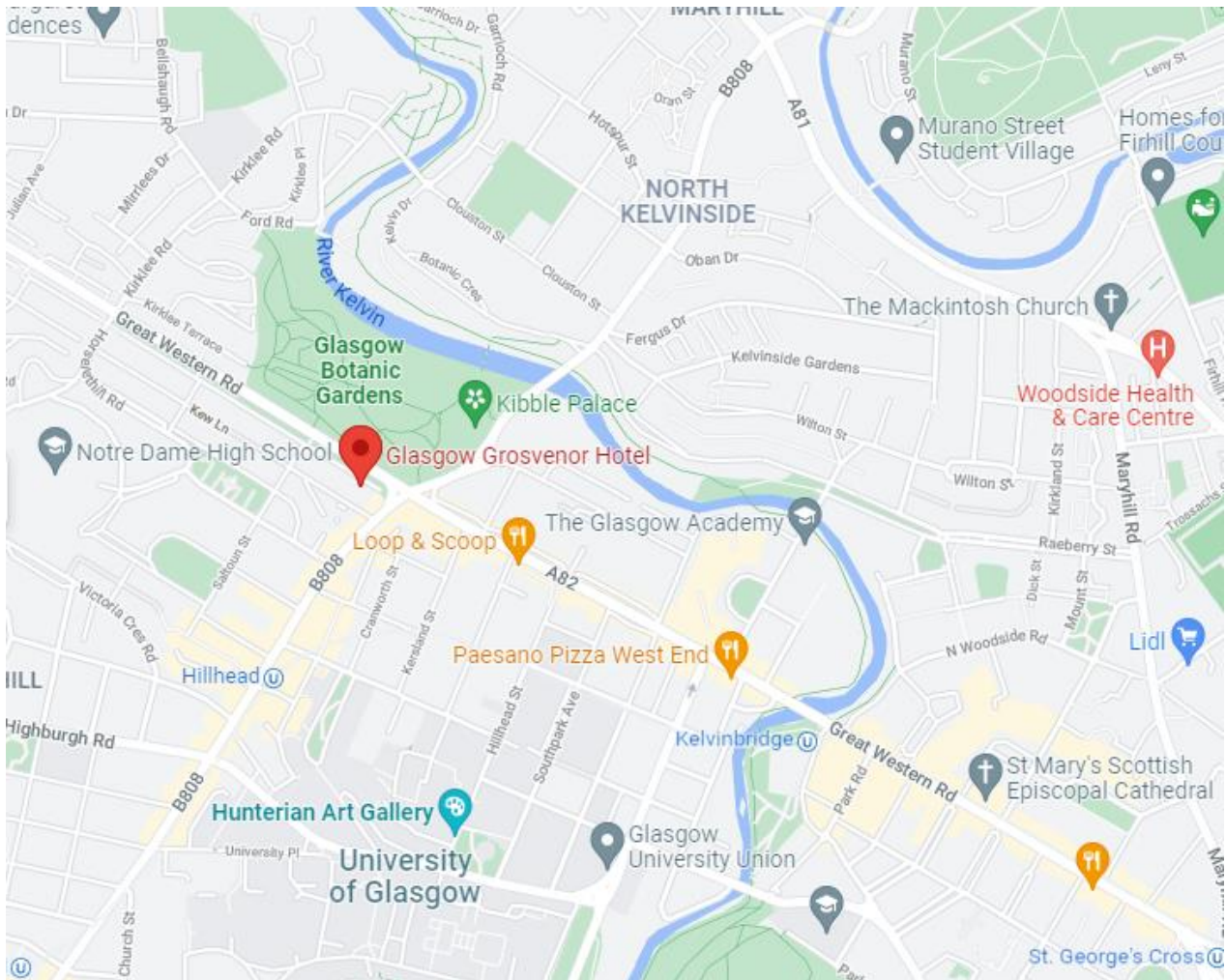




This tour starts and finishes at The Grosvenor Hotel, Glasgow.

1-9 Grosvenor Terrace,
Glasgow,
G12 0TA
Tel: 0141 339 8811

Please note that transport to the hotel is not included in the price of the tour.



Transport

If you are travelling by **car**: The Grosvenor Hotel, Glasgow is located 5 minutes from the M8 motorway and 5 minutes' walk from Hillhead subway station. The hotel is situated on the corner of the junction between Byres Road and Great Western Road. On arrival, directly after the hotel turn right, into the lane between the Hilton and Waitrose. Stop at the hotel entrance and get a car park ticket from reception. Finally, drive up the ramp of the Waitrose car park on the left, and keep on going until the top level, which is reserved for hotel guests and the residents of the adjoining flats. *Parking is £10 per day, payable locally.*

If you are travelling by **train**: The nearest subway stop is Hillhead, which is about a 5 minute walk away on Byres Road. Glasgow Central Station is about 15 minutes by taxi to the hotel.



Accommodation

The Grosvenor Hotel

The Grosvenor Hotel is a traditional four-star hotel in the vibrant West End area of the city centre. It is ideally situated in close proximity to the array of locations visited during your tour including the Hunterian Gallery and University.

Bedrooms are equipped with all necessities to ensure a relaxing and enjoyable visit, including an en-suite bathroom with bath/shower, TV, telephone, Wi-Fi, hairdryer and complimentary tea/coffee making facilities.

Additional details can be found via the hotel website:

<https://www.gghotel.co.uk/>

Check-in and departure from the hotel

On the day of arrival you will be able to check-in at the hotel from 15.00, and the tour manager will meet you in the evening at the welcome reception.

On the last day of the tour, the tour will not finish until approximately 17.00 – 17.30 so you should check with your tour manager, or the hotel reception, where luggage should be stored until your departure.

Extra nights

If you have booked to stay an extra night at the hotel, this is on bed and breakfast basis and check out from the hotel is midday.

Special requests

If you haven't already done so, please notify Travel Editions of any special requests as soon as possible to allow sufficient time to make the necessary arrangements.

Dining

On the first night of your stay, a private dinner with wine is provided. A light lunch is provided on days two and three of the tour. On the second evening, dinner will be in the Glasgow Art Club. Breakfast on both days of your stay is included in the price but meals other than these stated are not included.

If you have booked to stay an extra night, dinner is not included on your final evening. However, there is the option to eat at the hotel restaurant, or a variety of restaurants can be found nearby.

Places Visited

House for an Art Lover

Set within the magnificent grounds of Glasgow's Bellahouston Park and inspired by the designs of Charles Rennie Mackintosh, House for an Art Lover combines art gallery and exhibition space, events venue, café, multipurpose artists' studios and magnificent visitor attraction into one unique and inspiring venue. Originally designed by Mackintosh as an elegant country retreat for a person of taste and culture, today, more than 110 years later, House for an Art Lover exists to stimulate public interest in art, design and architecture. Through its studios, exhibitions, scholarships and access to learning for all ages, it has widened Mackintosh's original vision to make House for an Art lover a house for everyone.

<http://www.houseforanartlover.co.uk/>

Willow Tearooms

Designed by Charles Rennie Mackintosh in 1903, the Willow Tearooms in Sauchiehall Street remain one of the city's major attractions for both local and overseas visitors. Following a major renovation in 2018, the Willow Tearooms are once again open. The original Willow Tea Rooms Building was initially opened by Miss Catherine Cranston and designed by Charles Rennie Mackintosh in 1903. They are the only surviving Tea Rooms designed by Charles Rennie Mackintosh. The location selected by Miss Cranston for the new tearooms was a four-storey former warehouse building on a narrow infill urban site on the south side of Sauchiehall Street. The street and surrounding area are part of the New Town of Blythswood created largely by William Harley of Blythswood Square in the early 1800s. The name "Sauchiehall" is derived from "saugh", the Scots word for a willow tree, and "haugh", meadow. This provided the starting point for Mackintosh and MacDonald's ideas for the design theme. Within the existing structure, Mackintosh designed a range of spaces with different functions and decor for the Glasgow patrons to enjoy. There was a ladies' tearoom to the front of the ground floor, with a general lunch room to the back and a tea gallery above it. The first floor contained the "Room de Luxe", a more exclusive ladies' room overlooking Sauchiehall Street. The second floor contained a timber-panelled billiards room and smoking rooms for the men. The design concept foresaw a place for the ladies to meet their friends, and for the men to use on their breaks from office work - an oasis in the city centre. The decoration of the different rooms was themed: light for feminine, dark for masculine. The ladies' tea room at the front was white, silver, and rose; the general lunch room at the back was panelled in oak and grey canvas, and the top-lit tea gallery above was pink, white, and grey. In addition to designing the internal architectural alterations and a new external facade, in collaboration with his wife Margaret, Mackintosh designed almost every other aspect of the tearooms, including the interior design, furniture, cutlery, menus, and even the waitress uniforms. Willow was the basis for the name of the tearooms, but it also formed an integral part of the decorative motifs employed in the interior design, and much of the timberwork used in the building fabric and furniture.

<https://www.mackintoshatthewillow.com/tearooms/>

Mackintosh House and Hunterian Art Gallery

The Mackintosh House is a careful re-assemblage of the key interiors from the Mackintoshes' Glasgow home. The couple lived at 78 Southpark Avenue from 1906 to 1914. Substantial alterations were made in 1906 as Mackintosh remodelled the proportions and natural lighting of the Victorian end-of-terrace house. The principal interiors were decorated in his distinctive style, remarkable then, and now, for the disciplined austerity of the furnishings and decoration.

The house was demolished in the early 1960s but the original fixtures were preserved and reassembled, complete with the contents, as an integral part of the Hunterian Art Gallery. The interiors, completed in 1981, have been furnished with the Mackintoshes' own furniture - all to Mackintosh's design - and decorated as closely as possible to the original. The selection of bric à brac, fitted carpets, curtains and other soft furnishings was based on contemporary descriptions of the house and photographs of Mackintosh interiors of the period.

<http://www.gla.ac.uk/hunterian/>

Kelvingrove Museum and Art Gallery

Kelvingrove Art Gallery and Museum is one of Scotland's most popular attractions. It has been a favourite with Glasgow residents and visitors since it opened in 1901. The museum has 22 themed galleries displaying an astonishing 8000 objects, brought together from across Glasgow Museums' rich and varied collection, which is a Recognised Collection of National Significance. The displays are extensive and wide-ranging and a highlight of which is their focus on Charles Rennie Mackintosh and the Glasgow Style; a gallery completely dedicated to the style movement which was the UK's contribution to Art Nouveau.

<http://www.glasgowlife.org.uk/museums/kelvingrove/Pages/default.aspx>

Glasgow Art Club

A highlight of this superb tour is an evening with dinner at The Glasgow Art Club. Founded in 1867, the Glasgow Art Club is steeped in history and heritage and remains one of Glasgow's most important landmarks for the arts in Scotland. Rich in culture, it has been a breeding ground for generations of the city's most innovative and creative inhabitants. The Grade A-Listed Clubhouse is resplendent with historically significant interior features including fireplaces, fretworks, grills and door fittings – all designed by a 25 year old Charles Rennie Mackintosh who was working as an apprentice to the architect John Keppie at the time.

The Hill House

High on a hill in Helensburgh, overlooking the River Clyde, sits what is universally regarded as Charles Rennie Mackintosh's finest domestic creation. The Hill House is a mix of Arts and Crafts, Art Nouveau, Scottish Baronial and Japonisme architecture and design. Mackintosh designed nearly everything inside the Hill House too, from the decorative schemes and the furniture to the fittings and contents. His wife, Margaret Macdonald, designed and made many of the textiles as well as a beautiful fireplace panel. Much of the house has been restored so it looks almost exactly as it did in 1904 when its first residents, Glasgow publisher Walter Blackie and his family, moved in. The beautiful, formal gardens have also been restored in line with the early designs, using plants that would have been available at the time.

<http://www.nts.org.uk/property/the-hill-house/>

Mackintosh Club Helensburgh

The Mackintosh Club in Helensburgh is the newly discovered Charles Rennie Mackintosh hidden gem, his first complete commission dated 1894. The Old Billiard Room features a permanent exhibition on the building's history and the connection with the infamous Glasgow Style and the Four.

Number 38-40 Sinclair Street is one of the most interesting and handsome buildings in the town of Helensburgh with a shallow undulating facade of finely worked masonry with crisply detailed carvings.

Officially opened in December 1895 as a clubhouse for the Helensburgh and Gareloch Conservative Club, it originally had 2 shops on the ground floor to generate revenue, the 1st floor fronting Sinclair Street was occupied by a reading and smoking room (now opened as one room and in residential use), to the rear on this floor there is a large hall which was for public meetings, the attic storey housed the billiard room and caretaker's offices. The innovative design of the principal facade and the interior suggest that Mackintosh was involved in the design of the clubhouse.

He had been in the offices of Honeyman and Keppie since 1889 and while many commissions at this period were ostensibly designed by John Keppie, many including the extension of the Glasgow Herald Building and Queen Margaret Medical College in the 1890s, were considered minor projects not warranting the attention of a senior member of the firm and were placed in the hands of a junior such as Mackintosh, whose reputation as an original architect soon spread.

<https://www.mackintoshclub.com/>

Queen Cross Church

Mackintosh Queen's Cross is one of Glasgow's hidden architectural gems. The only church in the world designed by the great Scottish architect, designer and artist, Charles Rennie Mackintosh. Commissioned in 1896 by the Free Church, the simplicity of the design is inspiring. The windows are Gothic in character, yet

are infused with the Mackintosh spirit, and the floral motifs he affected can be easily recognised, particularly on the tracery of the large western window above the chancel.

Mackintosh Queen's Cross now houses a plethora of events for the CRM Society and has provided Glasgow with a new venue for weddings, concerts, meetings and seminars. The CRM Society continues to deliver lively learning experiences, workshops and activities for schools, students, adults, families and children. This year the Society launched a new volunteer programme offering new recruits a range of opportunities to get involved in supporting the organisation.

<https://mackintoshchurch.com/>

Your Guides


Robin and Karen Cairns are your hosts for this weekend exploration of the world of Charles Rennie Mackintosh. Karen is a practising architect. Since discovering Mackintosh as a student she has pursued her fascination with his work and, as a watercolour artist, had her paintings exhibited in The Hill House, one of Mackintosh's finest buildings. Robin Cairns is a playwright, poet and public speaker. He has delved into the character of Mackintosh, the Glasgow lad who rose from the tenements to become the most radical architect in Europe - but who left Glasgow at the height of his powers, never once to return. Robin's play, *The Life of Charles Rennie Mackintosh*, has been performed recently at The Tron Theatre, Glasgow. After dinner on Friday evening Robin will give an introductory talk entitled, *Charles Rennie Mackintosh, Conjuror and Magician*.

Practical Information






Tour Manager – Your tour manager will be on hand throughout the tour to ensure that everything operates according to plan. If you have any problems or questions please see him or her immediately – it is often possible to resolve complaints or problems very quickly on the spot, and do everything to help you enjoy your holiday.

Tipping – To keep our tours affordable, we do not increase the tour price by adding in tips. However, in the tourism industry, there is a certain level of expectation that when receiving a good service, one does award with a tip. Tour Managers, Representatives, Guides and Drivers appreciate a tip at the end of their involvement with the tour, but this is entirely at your discretion. We believe in allowing you to tip according to your level of satisfaction with their services, but for your guidance about £2-3 per person per day for the tour manager is the norm. We would like to reiterate that tipping is an entirely optional payment and this information is given purely to answer any questions you may have about it.

Walking Content – This tour has been graded a 4 out of 5 for walking difficulty.

Walking difficulty: 

Please see the key below for an explanation of the footprint symbols:

Very little walking involved	
Relaxed easy pace, mainly walking from coach to site	
Some walking between sites, good, flat walking surfaces	
Walking between sites, lots of standing for viewings	
On your feet all day, uneven terrain (cobblestones etc)	



Insurance

Although this is a UK holiday please note that, should you cancel your holiday, the amount paid is non-refundable. For this reason you may wish to take out insurance just in case an unforeseen event caused you to have to cancel the tour. As well as covering cancellations, your travel insurance will also cover your baggage and personal belongings in case they are lost or stolen.



Emergencies

Should an emergency arise, please call our offices on:

020 7251 0045

Outside office hours (Mon-Fri 0900-1700), telephone our emergency staff on:

07841 023807

PLEASE USE THESE NUMBERS ONLY IN THE EVENT OF A GENUINE EMERGENCY.

Travel Editions
 3 Young's Buildings, London EC1V 9DB
 Tel: 020 7251 0045
 Email: tours@traveleditions.co.uk www.traveleditions.co.uk

PLEASE NOTE: THIS INFORMATION IS CORRECT AT THE TIME OF PRINTING.
 IT IS MEANT AS A GUIDE ONLY AND WE CANNOT ACCEPT RESPONSIBILITY FOR ERRORS OR SUBSEQUENT CHANGES