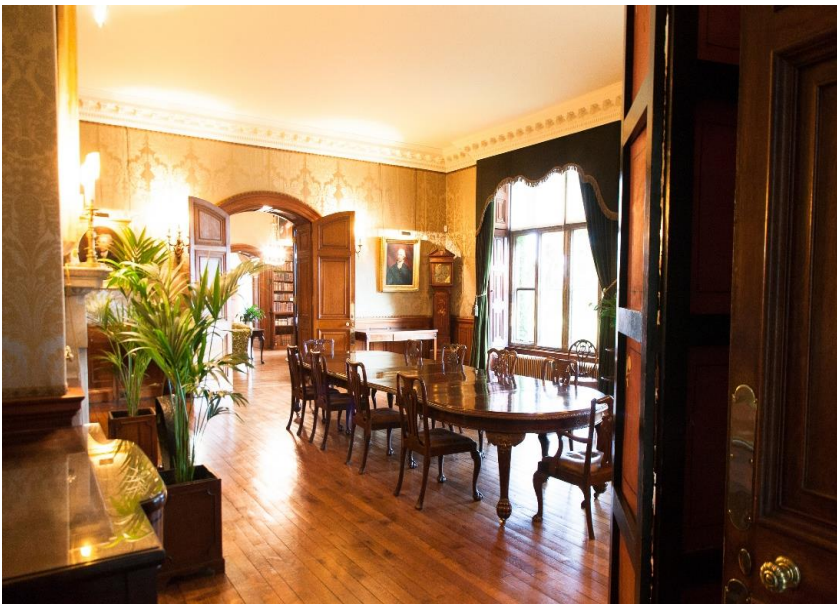




# Tour Information



## Oliver Cromwell – Warts & All





The tour starts and finishes at the **Northampton Marriott Hotel**. The Northampton Marriott Hotel is situated in the heart of Northampton town centre and located in close proximity to the attractions visited during the tour.

Eagle Drive

Northampton

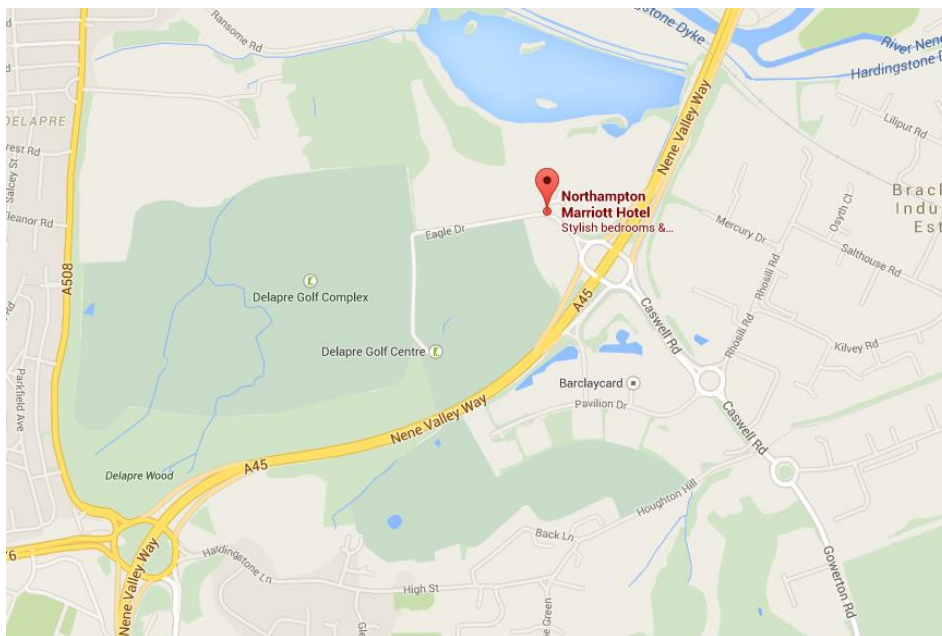
England

NN4 7HW

Tel: 01604 768700

E-mail: mh.rs.ormnh.group.coord@marriotthotels.com

**Please note that transport to the hotel is not included in the price of the tour.**



## Transport

**Travelling by car from the South on the M1:** Exit at Junction 15 taking the A508 to Northampton, which turns into the A45. Go as far as the Brackmills/Delapre Golf turnoff. (ignore any signs for the town centre, keeping to the A45) When you get to the Brackmills/Delapre turnoff take this left hand lane up to the traffic lights and take a left. You will see the hotel on your right.

**Travelling by car from the South on the A43:** Go under the M1, follow the signs for the A45 to Wellingborough/Kettering. Go as far as the Brackmills/Delapre Golf turnoff.

**Travelling by car from the North/West on the A45:** Follow the A45 all the way to the Delapre/Brackmills turnoff.

**Travelling by car from the North/West on the M1:** Take Junction 15 (not 15A) taking the A508 to Northampton, which turns into the A45.

**Travelling by train:** The closest train station is Northampton, situated 4.8KM from the hotel.

**Travelling by bus:** The nearest bus station is Northampton, situated 3.2KM from the hotel.



# Accommodation

## Northampton Marriott Hotel

Northampton Marriott Hotel provides four-star accommodation in close proximity to the places of interest explored throughout the tour, as well as many popular attractions and leisure activities.

The hotel offers a range of facilities including a health club, an indoor pool, and a spa tub.

Bedrooms are equipped with all necessities to ensure a relaxing and enjoyable stay. These comprise a private en-suite bathroom, LCD televisions and complimentary tea and coffee making facilities.

More information can be found via the hotel's website:

<http://www.marriott.co.uk/hotels/travel/ormnh-northampton-marriott-hotel/>

## Check-in and departure from the hotel

On the day of arrival you will be able to check-in at the hotel from 15.00, and the tour manager will meet you in the evening at the welcome reception.

On the last day of the tour, the tour will not finish until approximately 17.00 – 17.30 so you should check with your tour manager, or the hotel reception, where luggage should be stored until your departure.

## Extra nights

If you have booked to stay an extra night at the hotel, this is on a bed and breakfast basis and check out from the hotel is at 11.00.

## Dining

On the first night of your stay, a private three-course dinner complemented with wine is provided. On the second evening of the tour, dinner with wine is provided at Holdenby House. Breakfast on both days of your stay is included in the price but meals other than these stated are not included.

If you have booked to stay an extra night, dinner is not included on your final evening. However, there is the option to eat at the hotel restaurant, or a variety of restaurants can be found nearby and the hotel offers some inspiration if looking to dine further afield on your final night:

<http://www.marriott.co.uk/hotels/hotel-information/restaurant/ormnh-northampton-marriott-hotel/>

## Special requests

If you haven't already done so, please notify Travel Editions of any special requests as soon as possible to allow sufficient time to make the necessary arrangements.

# Places Visited

## Ely

Our visit to Ely includes a visit to Oliver Cromwell's House, now a museum dedicated to his life. This was the family home of Oliver Cromwell, the kitchen dates from around 1215, other parts being built later. In 1988, it was bought by the local council, and has been refurbished to show how it may have looked during Cromwell's lifetime. The house now boasts a completely re-vamped Civil War Exhibition with impressive interactive displays and interpretations. There is also a new timeline and family tree to provide more engaging content about this complex man who killed a King but refused the crown.

<http://www.olivercromwellshouse.co.uk/>

## Ely Cathedral

No visit to Ely is complete without a visit to the magnificent Cathedral. The present building dates back to 1083, and, architecturally, it is outstanding both for its scale and stylistic details. Throughout the 1640s, with Cromwell's army occupying the Isle of Ely, a puritanical regime of worships was imposed. That no significant destruction of the cathedral occurred during the Civil War, may be due to his protection.

<http://www.elycathedral.org/>

## Holdenby House

Once the largest private house in England, and subsequently the palace of James 1 and prison of Charles 1, following the battle of Naseby. Holdenby Palace was built in 1583 by Sir Christopher Hatton, Lord Chancellor of Elizabeth I. Following his death, the house became the Palace of James I, after the civil war the palace was sold to a Parliamentarian, Adam Baynes, who reduced it to a single wing. Following the restoration in 1660, it reverted briefly to royal ownership. Before going back into private ownership in 1709 when the site bought by the Duke of Marlborough, since when it has descended the female line to the Lowther family. A special private visit and guided tour followed by dinner with wine will take place at Holdenby House on the second night of the tour.

<http://www.holdenby.com/>

## Cromwell Museum, Huntingdon

Our visit to Oliver Cromwell's home town of Huntingdon includes the Cromwell Museum, located in the former Huntingdon Grammar School building, where the young Cromwell was educated as a schoolboy and first received exposure to Puritan ideas through the teaching of Dr Thomas Beard. On display is a vestry book of the parish of St Ives, which includes his signature, and some of his possessions, even his hat. Later in life Cromwell moved in powerful and wealthy circles and he received some beautiful gifts, now amongst the museum's exhibits including a magnificent Florentine perfume cabinet, a gift from the Grand Duke of Tuscany and a 17th century medicine chest, still with its surgical instruments and tools, which Cromwell took on campaign with him. Also on show is the original escutcheon which was draped across his coffin and a death mask made directly from Cromwell's face soon after he died.

<http://www.cromwellmuseum.org/>

## St John's Church, Huntingdon

Cromwell was baptised at the church of St. John in 1599 as were most of his children. The church no longer exists but the font is now located in All Saints Church in Huntingdon which also houses all of the old parish registers for St Johns Church. in 1612, King James I ordered that the body of his mother Mary, Queen of Scots, should be transferred from its resting place in Peterborough Cathedral, to a new, grand tomb in

Westminster Abbey. The funeral procession paused overnight during the journey, and the catafalque (raised platform) carrying the queen's body, was set for the night upon the chancel steps of All Saints.

<https://www.britainexpress.com/attractions.htm?attraction=4491>

### Huntingdon Castle

Huntingdon Castle. Huntingdonshire was on the side of the Parliamentary forces and they occupied the earthworks of the former castle which was converted into an artillery battery to control the crossing over the Great River Ouse, as the two sides vied for control of neighbouring Lincolnshire. Parts of the castle did remain, including the chapel, and its ownership passed through a number of hands. The castle was refortified during the Civil War. For a time it served as the county gaol, and later a windmill stood on the castle mound. Nothing now remains of the castle itself apart from its earthworks, although the site is a scheduled ancient monument.

[https://huntingdon.cambs.info/history/huntingdon\\_castle.asp](https://huntingdon.cambs.info/history/huntingdon_castle.asp)

### Naseby Battlefield

Naseby settled the Civil War ... in June 1645 the King's principal army was eliminated. The King's cabinet and incriminating papers were captured and within a year, the war was over. The victory established Parliament's right to a permanent role in the government of the kingdom. Naseby was a victory for the army 'new modelled' – Britain's first regular, red-coated soldiers and is, for many, the birthplace of the British Army and is widely recognised as the most important battle in English History after Hastings.

<http://naseby.com/>

## Your Guide

**Mike Ingram** is a medieval historian, author and lecturer. He regularly leads tours around medieval battlefields and is also chairman of the Northampton Battlefields Society. His book *Battle Story: Bosworth 1485* was published in 2012.

### Mike will give the following talk:

'Cromwell: His Life'

## Practical Information






**Tour manager** - Your tour manager will be on hand throughout the tour to ensure that everything operates according to plan. If you have any problems or questions please see him or her immediately – it is often possible to resolve complaints or problems very quickly on the spot, and do everything to help you enjoy your holiday.

**Tipping** –To keep our tours affordable, we do not increase the tour price by adding in tips. However, in the tourism industry, there is a certain level of expectation that when receiving a good service, one does award with a tip. Tour Managers, Representatives, Guides and Drivers appreciate a tip at the end of their involvement with the tour, but this is entirely at your discretion. We believe in allowing you to tip according to your level of satisfaction with their services.

**Walking Content** – This tour has been graded a 3 out of 5 for walking difficulty.

Walking difficulty: 

Please see the key below for an explanation of the footprint symbols:

Very little walking involved	
Relaxed easy pace, mainly walking from coach to site	
Some walking between sites, good, flat walking surfaces	
Walking between sites, lots of standing for viewings	
On your feet all day, uneven terrain (cobblestones etc)	



## Insurance

Although this is a UK holiday please note that, should you cancel your holiday, the amount paid is non-refundable. For this reason you may wish to take out insurance just in case an unforeseen event caused you to have to cancel the tour. As well as covering cancellations, your travel insurance will also cover your baggage and personal belongings in case they are lost or stolen.



## Emergencies

Should an emergency arise, please call our offices on:

020 7251 0045

Outside office hours (Mon-Fri 0900-1700), telephone our emergency staff on:

07841 023807

**PLEASE USE THESE NUMBERS ONLY IN THE EVENT OF A GENUINE EMERGENCY.**

Travel Editions  
3 Young's Buildings, London EC1V 9DB  
Tel: 020 7251 0045  
Email: [tours@traveleditions.co.uk](mailto:tours@traveleditions.co.uk) [www.traveleditions.co.uk](http://www.traveleditions.co.uk)

PLEASE NOTE: THIS INFORMATION IS CORRECT AT THE TIME OF PRINTING. IT IS MEANT AS A GUIDE ONLY  
AND WE CANNOT ACCEPT RESPONSIBILITY FOR ERRORS OR SUBSEQUENT CHANGES