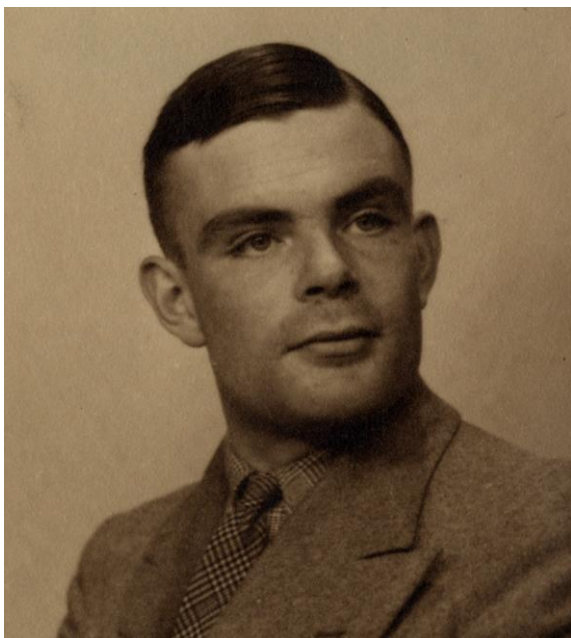


Tour  
Information



# The Life and Work of Alan Turing



## **Day by day itinerary**

**Day 1:** Arrive independently at the Northampton Marriott Hotel. Evening welcome reception, dinner and lecture by New Scientist's Hal Hodson about Alan Turing including his time at Cambridge.

### **Day 2: Full day visit to Cambridge.**

Full day visit to Cambridge where Turing studied mathematics and went on to lay the theoretical foundations for modern computers. You will explore with local guide Rosie Zanders including entrance to Kings College, the Chapel and its archives. Subject to traffic conditions the tour will commence at the American WWII Cemetery at Madingley; in the Memorial Chapel there is a beautiful 3-D sculpted wall map of WWII battles, which gives a good illustration of the importance of the work carried out by Bletchley Park code-breakers, with particular reference to Turing and other Cambridge graduates. From Madingley we drive through the new high-tech West Cambridge development, where some of the state-of-the-art buildings reflect Turing's legacy; one notable building is the William Gates Building, the University Computer Science Laboratory, a department founded originally by Maurice Wilkes, a contemporary and colleague of Turing's in the Maths Department. Drive past Newnham College, the all-women's college attended by Joan Clarke; who was engaged to Alan Turing for a while (and featured prominently, though inaccurately, in the Imitation Game film), and later a lifelong friend of his, she got a double 1st in maths in 1939 and was recruited for Bletchley Park by Gordon Welchman. You will also see the River Cam – Turing was a keen rower whilst at Cambridge, and the Eagle pub, a favourite haunt of air force personnel and where Francis Crick first announced that he and James Watson had discovered DNA. Then to the Gothic splendour of Kings College and its chapel with its medieval stained glass, where he read the lesson on several occasions. We will visit the archives here too – not normally open to the public – which include original documents taken from the Papers of Alan Turing, illustrating his short life. These include letters the young schoolboy wrote to his mother, photographs taken throughout his life, some of his publications including the famous ENTSCHEIDUNGSPROBLEM paper - the foundation document of computer science, his dissertation to earn a Fellowship at King's, and the notes he was working with on morphogenesis at the end of his life. The tour will also take in Trinity College, where his grandfather studied maths, as did Welchmann and Tutte (Bletchley Park codebreakers) and which has a long mathematics history dating back to Isaac Newton – a descendant of his famous apple tree remains.

Back to Northampton for evening dinner with wine and talk by Dr Mark Baldwin, entitled "The Enigma and the Battle of the Atlantic." Mark will bring his own rare four-rotor Enigma machine for guests to examine.

### **Day 3: Bletchley Park and the Museum of Computing**

Morning visit to Bletchley Park and the Museum of Computing, including guided tour. Bletchley Park in Buckinghamshire was Britain's main decryption establishment during World War II, and where Turing was a pivotal figure. Here, you will visit Turing's office recreated to how it would have looked during the Second World War and discover the ingenious mathematical techniques and devices that Turing and his colleagues designed to crack the Enigma messages. For a time he led Hut 8, the section responsible for German naval cryptanalysis and he devised a number of techniques for breaking German ciphers, including improvements to the pre-war Polish bombe method and an electromechanical machine that could find settings for the Enigma machine. Turing played a pivotal role in cracking intercepted coded messages that enabled the Allies to defeat the Nazis in many crucial engagements, including the Battle of the Atlantic; it has been estimated that this work shortened the war in Europe by as many as four years and was so crucial that Winston Churchill acknowledged his role, saying that Turing made the single biggest contribution to Allied victory. He was awarded the OBE in 1945. Whilst here we will also visit the adjacent National Museum of

Computing for a guided tour of an institution that houses the world's largest collection of functional historic computers, including the rebuilt Colossus, the world's first electronic computer, and the WITCH, the world's oldest working digital computer.

Mid-afternoon transfer to Manchester to look at the post-war phase of Turing's life until his death in 1952. Check in at the Marriott Victoria and Albert Hotel for a two-night stay in the heart of the city. Evening free for own dinner at one of the many restaurants within a short walk of the hotel.

**Day 4: Full day visit in Manchester.**

A full day in Manchester with local Turing guide, Ed Glinert starts with a morning walking tour from the university campus to Sackville Gardens, where there is a statue of Turing, with a plaque that reads: "Father of computer science, mathematician, logician, wartime codebreaker, victim of prejudice". A highlights of Manchester coach tour, passing such grand buildings as the town hall and John Rylands Library and including a lunch stop at Salford Quays. Afternoon walking tour of Castlefield, the birthplace of Manchester and of industry, ending at the Museum of Science for an independent visit. Turing joined Max Newman's Computing Machine Laboratory at the Victoria University of Manchester in 1948 where he helped develop the Manchester computers, including the Manchester Ferranti Mark 1 and conducted pioneering work into artificial intelligence. He also turned his attention to mathematical biology. He was arrested in 1952 at a cinema (which we shall see on the walking tour) for homosexual acts, when he accepted treatment with DES (chemical castration) and committed suicide in 1954, 16 days before his 42nd birthday. Gordon Brown made an official apology for his treatment in 2009 and he was granted a posthumous pardon in 2013, a life sadly too short and a victim of the archaic attitudes of the time. Evening at leisure.

**Day 5:** The morning is free in Manchester – perhaps visit the Whitworth Gallery with afternoon transfer back to Northampton or depart from Manchester station as you prefer.

**Please note that the tour starts (and finishes) at the Marriott Northampton. If you travel by train you may prefer to return from Manchester to reduce the need for the return coach transfer.**



The tour starts and finishes at the **Northampton Marriott Hotel**.

The Northampton Marriott Hotel

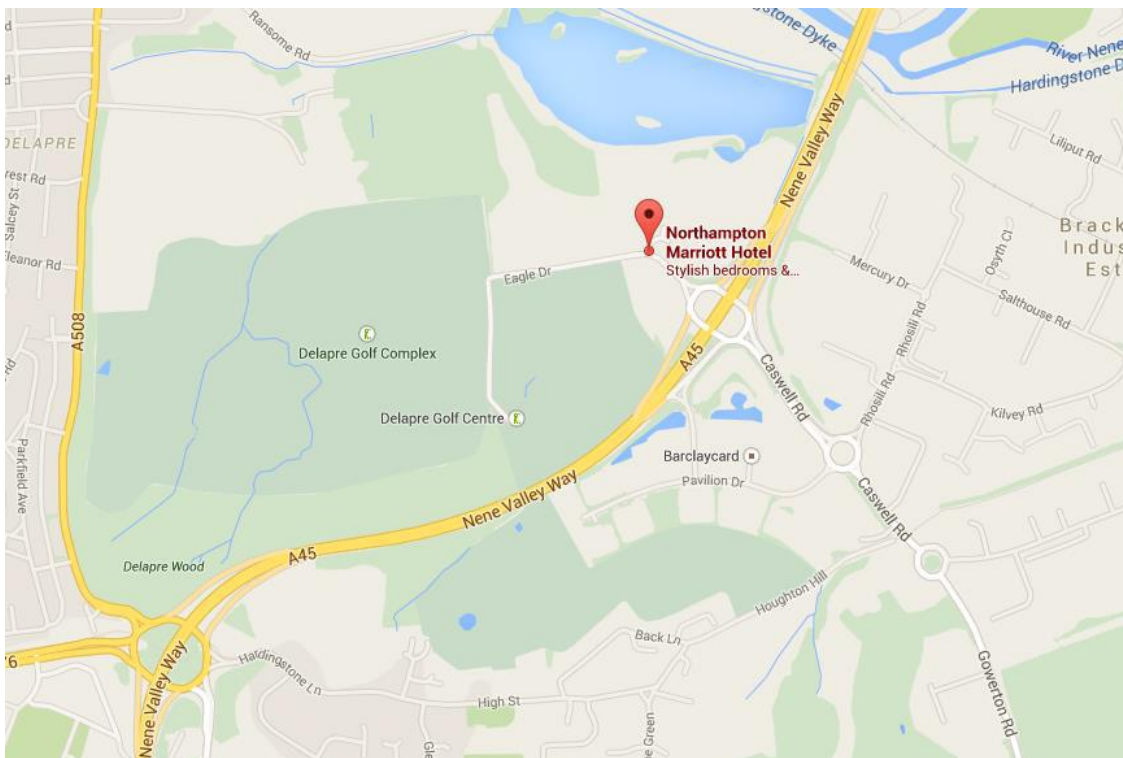
Eagle Drive

Northampton

NN4 7HW

Tel: 01604 768700 / e-mail: [mhrs.ormnh.group.coord@marriotthotels.com](mailto:mhrs.ormnh.group.coord@marriotthotels.com)

**Please note that transport to the hotel is not included in the price of the tour**



## **Transport**

**Travelling by car from the South on the M1:** Exit at Junction 15 taking the A508 to Northampton, which turns into the A45. Go as far as the Brackmills/Delapre Golf turnoff. (Ignore any signs for the town centre, keeping to the A45) When you get to the Brackmills/Delapre turnoff take this left hand lane up to the traffic lights and take a left. You will see the hotel on your right. **Travelling by car from the South on the A43:** Go under the M1, follow the signs for the A45 to Wellingborough/Kettering. Go as far as the Brackmills/Delapre Golf turnoff

**Travelling by car from the North/West on the A45:** Follow the A45 all the way to the Delapre/Brackmills turn off.

**Travelling by car from the North/West on the M1:** Take Junction 15 (not 15A) taking the A508 to Northampton, which turns into the A45.

**Travelling by train:** The closest train station is Northampton, situated 4.8KM from the hotel.

**Travelling by bus:** The nearest bus station is Northampton, situated 3.2KM from the hotel.

*Parking at the hotel is provided free of charge for Travel Editions clients.*



## Practical Information

**Tour manager** — Your tour manager will be on hand throughout the tour to ensure that everything operates according to plan. If you have any problems or questions please see him or her immediately – it is often possible to resolve complaints or problems very quickly on the spot, and do everything to help you enjoy your holiday.

**Tipping** – To keep our tours affordable, we do not increase the tour price by adding in tips. However, in the tourism industry, there is a certain level of expectation that when receiving a good service, one does award with a tip. Tour Managers, Representatives, Guides and Drivers appreciate a tip at the end of their involvement with the tour, but this is entirely at your discretion. We believe in allowing you to tip according to your level of satisfaction with their services, but for your guidance about £2-3 per person per day for the tour manager is the norm. We would like to reiterate that tipping is an entirely optional payment and this information is given purely to answer any questions you may have about it.



## Insurance

Although this is a UK holiday please note that, should you cancel your holiday, the amount paid is non-refundable. For this reason you may wish to take out insurance just in case an unforeseen event caused you to have to cancel the tour. As well as covering cancellations, your travel insurance will also cover your baggage and personal belongings in case they are lost or stolen.



## Emergencies

**Should an emergency arise, please call our offices on:**

020 7251 0045

Outside office hours (Mon-Fri 0900-1700), telephone our emergency staff on:

07805 880240 or

020 7987 5910 or

07831 133079 or

**PLEASE USE THESE NUMBERS ONLY IN THE EVENT OF A GENUINE EMERGENCY.**

Travel Editions

69-85 Tabernacle Street, London EC2A 4BD

Tel: 020 7251 0045

Email: [info@traveleditions.co.uk](mailto:info@traveleditions.co.uk) [www.traveleditions.co.uk](http://www.traveleditions.co.uk)

PLEASE NOTE: THIS INFORMATION IS CORRECT AT THE TIME OF PRINTING. IT IS MEANT AS A GUIDE ONLY  
AND WE CANNOT ACCEPT RESPONSIBILITY FOR ERRORS OR SUBSEQUENT CHANGES